

# PUGDUNDEE SAFARIS



*Exclusive Wildlife Lodges and Experiences*

**Our Sustainability Journey & why we  
believe it works for us and for our  
lodging business**

**April 2019** c Pugdundee Safaris



**First shown at the TOFTigers 'Driving the Change' Event, New Delhi 2019**

# PUGDUNDEE SAFARIS



*Exclusive Wildlife Lodges and Experiences*

KINGS LODGE, BANDHAVGARH

TREE HOUSE HIDEAWAY, BANDHAVGARH

PENCH TREE LODGE, PENCH

KEN RIVER LODGE, PANNA

DENWA BACKWATER ESCAPE, SATPURA

KANHA EARTH LODGE, KANHA

# 5 Cs OF AN ECO LODGE



**CONSTRUCTION**



**COMMUNITY**



**CUSTOMER**



**CONSERVATION**

?

# CONSTRUCTION

HABITAT IMPROVEMENT | SELECTION OF SITE FOR BUILDINGS | GROUND WATER RECHARGE  
NO TREE CUT

## Kanha Earth Lodge

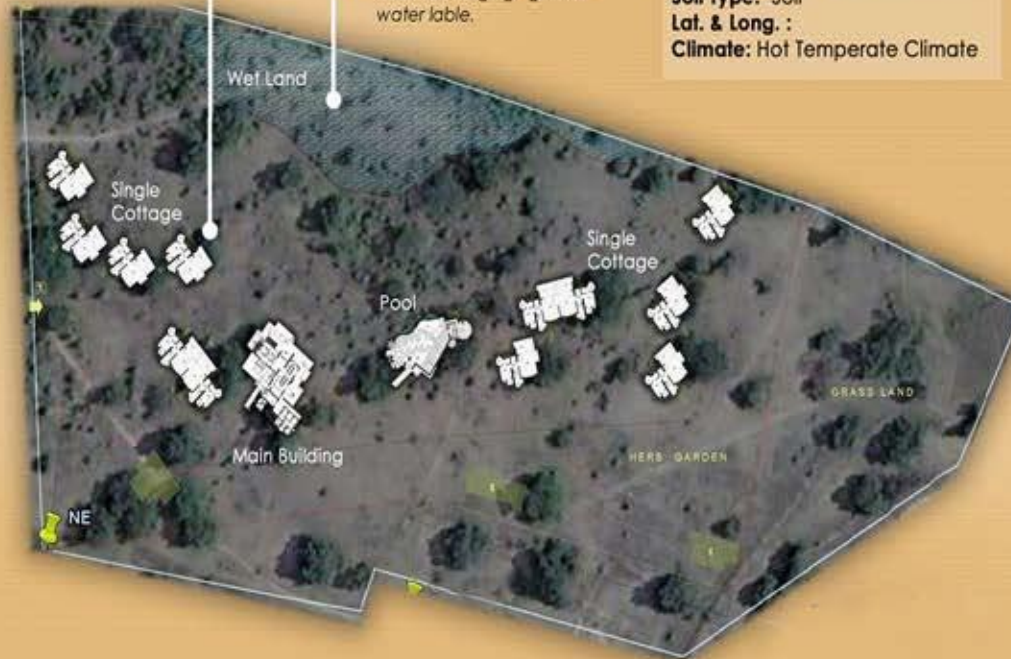
The vernacular architecture of the Kanha region was the dominant factor in shaping the built form, characterized by verandahs, pitched roofs, deep overhangs, large openings owing to a concern for shade & cross ventilation.

Light falling on undulating Stone surfaces produce shadows, thereby the joints acquire a pronounced effect. The walls transmit a simple primitive image.



The existing trees around which the cottages are planned.

The area dug for creation of wet land. This is ultimately creating a natural Habitat within the site and recharging ground water table.



Site Plan:

**Location :** Kanha National Park

**Site Area :** 16 acres

**Constructed area:** 17000 sq.ft.

**Soil Type:** Soil

**Lat. & Long. :**

**Climate:** Hot Temperate Climate

Improving the Habitat :



Before



After



# REWILDING



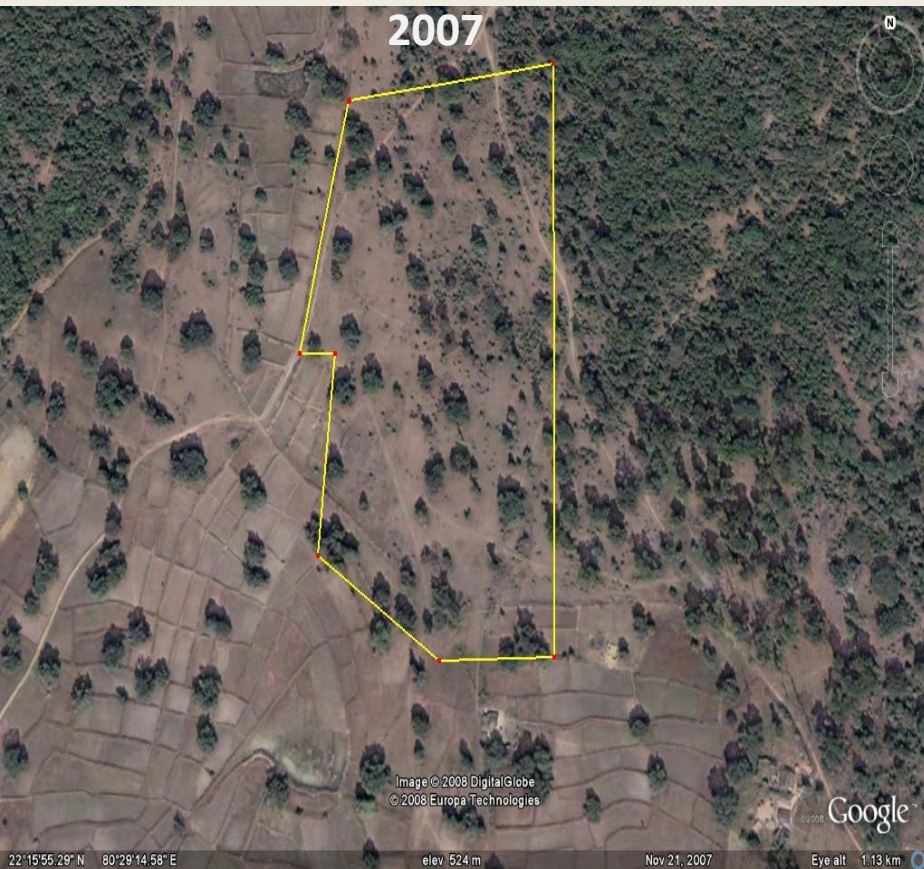
**Then**



**N o w**



# GOOGLE EARTH SCREENSHOTS (2007 & 2017)





# GOOGLE EARTH SCREENSHOTS (2009 & 2018)



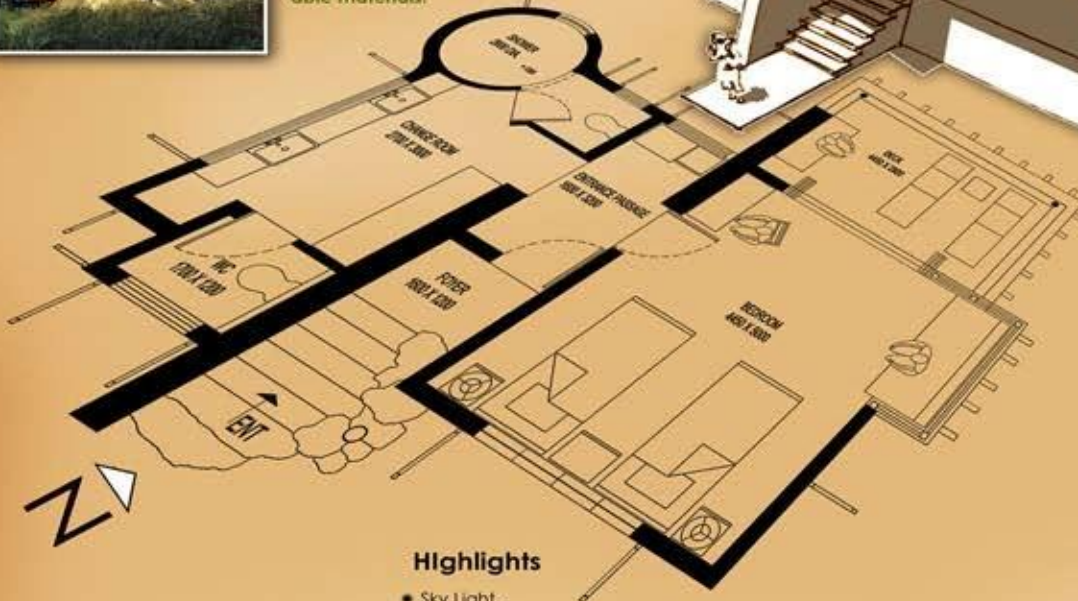


# SENSITIVE CONSTRUCTION

USE OF NATURAL LIGHT | LOCAL MATERIAL USAGE | LOCAL MANPOWER

## Cottage unit

Each cottage is oriented adjacent to a tree such that the shadows cast remains over the cottage for the better part of the day. This helps in reducing radiant heat gain. The basic concept has been derived from the vernacular architecture of the area, including the usage of mud plaster, stone, terracotta tiles & rough hewn timber beams & columns. All these elements are orchestrated to present a harmonious design. The footprint is kept to a minimum & the visual impact of cottages is greatly reduced by the use of locally available materials.



## Highlights

- Sky Light.
- No Trees Cut, Construction around the existing vegetation.
- Most material sourced from neighbouring villages.
- Sewage disposal by President Awardee Shankar Bolram Septic Tanks.
- Dual cisterns and water saving devices.





# GREEN FURNITURE

## COFFEE TABLE

Constructed from old Tamrind tree wood having a sand blasted glass at the top.



## CENTER TABLE



Completely constructed from hard wood 'SAJA', displays grains of natural contrast.

## SOFA - 2 SEATER



Completely constructed from old Tamrind tree wood showing natural contrast of heartwood.

## SOFA



Completely constructed from hard wood 'SAJA'. The back of sofa is a live edge plank with branching.



## MIRROR

Completely constructed from old Tamrind wood showing natural heartwood & outer sap wood.

## COFFEE TABLE

Constructed from old Tamrind tree wood. The clear glass top insert enables one to view the natural grains.



## PEG TABLE

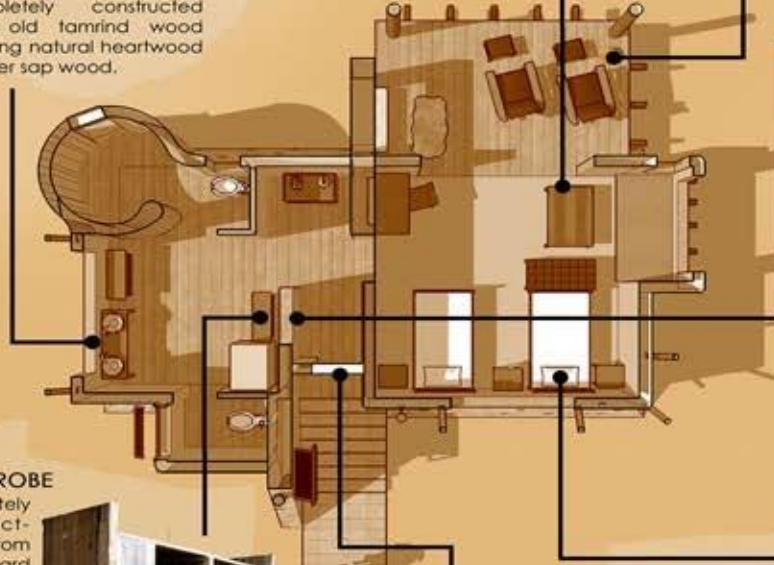


Completely constructed from monolithic hard wood. The peg table displays natural contrast of inner heartwood & outer sap wood, showing graceful surface sun cracks.



## HAT STAND

Constructed from old Tamrind tree wood. The mirror frame shows natural hollow form with a natural contrast of heartwood & sapwood.



Railway sleeper waste wood furniture

## WARDROBE

Completely constructed from solid hard wood. The unit consists of drawers for foot-wear at the bottom, space for hanging clothes & cabinet to house the safe.



## DOOR

Completely constructed from solid hard wood frame. Thin wood teak biscuits of wood have been pasted on top of a 12 mm ply.



## MASTER BED

Frame constructed from seasoned SAJA wood to display the most amazing colours & grain variation. It is extremely dense hardwood yielding a beautiful rich texture & deep grain.



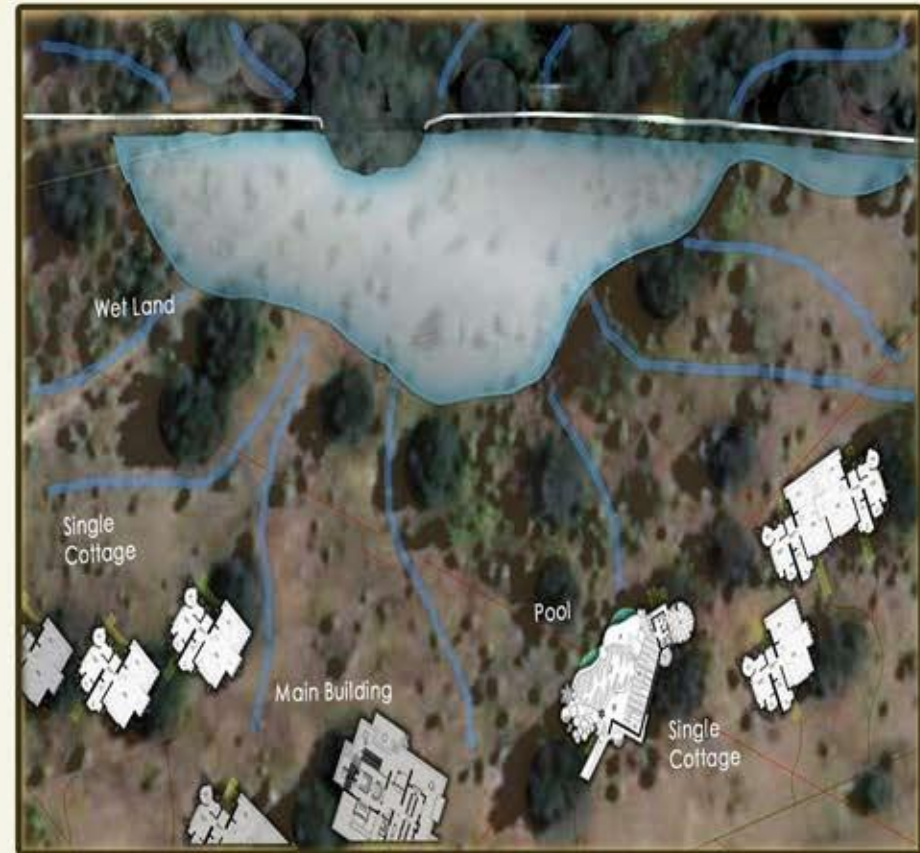
Green Furniture- Hand Crafted From Waste Wood & Railway sleepers



# OTHER CONSTRUCTION TECHNIQUES

**Sustainable Features:** - An effort to bring the sustainable design, renewable & recycled building materials.

- The Buildings are located such as not to disturb vegetation. - **Not a Single tree was felled during construction.**
- Buildings are sited around existing trees, such that they remain protected from the solar radiant heat.
- The natural hygroscopic materials are used which absorbs & release moisture readily, **filtering out the air pollution & releasing clean air** in the transaction between interior & exterior spaces.
- Natural ventilation to avoid radon build up & also to increase natural day lighting through fenestration.
- 3 layered roof systems: The air Trapped between the layers provides ideal insulation that keeps the interior cool against the heat.





# NEW CONSTRUCTION- WAGHOBA ECO LODGE

ARCHITECTS BIOME ENVIRONMENTAL SOLUTIONS

INDIA'S LEADING SUSTAINABLE ARCHITECTURE FIRM

USING SUN DRIED ADOBE BRICKS

GUNA VOLT ROOFS



# COMMUNITY

Our strength comes from our team, more than 70% of whom are from the nearby villages. Many young ones have grown with us to become managers, inspiring a brigade of fellow villagers. We regularly conduct trainings to enhance their skills and for capacity building. Many casual workers who joined us during construction are now an integral part of the team. The villagers are the true bastions of these forests and we all have united for a sustainable tomorrow. To conserve our wild spaces it's important that the locals be a part of the emerging tourism industry and are not alienated.

Though a drop in the ocean we work with the village school and community for many programs.

## HIGHLIGHTS

- Good salary standards
- Good accommodation, recreational facilities & nutritious food.
- Medical insurance coverage & domiciliary for the complete team.
- Workmen compensation for the complete team
- Regular training, capacity building and supporting entrepreneurship.
- Extremely low attrition rate especially among locals.
- Working closely with the village school & Panchayat.
- Major part of purchases & local manpower requirements from neighbouring villages.



# CHANGE MAKERS

A few examples from our team from major departments of the Lodge. We count our success in the lives we have improved around our Lodges.



## ROHIT PATLE

Rohit Patle - From the neighbouring tribal village of Dhanwar (1 km from our lodge) he joined our team during construction in 2008 as an errand boy. With his commitment, hard work, training by the lodge & experience he is part of the management team today. He is well trained to handle accounts, supervision, guest handling, front office and in need can easily don the hat of a naturalist. He also led the walking safari outfit handling more than 40 guests & supervising 25 local boys. **He was promoted as assistant manager of a luxury lodge in October 2016** & god willing a manager some day of one of our lodges.

# CHANGE MAKERS

## HANUMAT UIKEY



**Hanumat Uikey** – From our own small & quaint village of Narna he joined the newly opened lodge in 2009 as a house boy. His attention to detail, meticulous room making, commitment & dedication paved his way to become housekeeping supervisor in 2013. Today he leads a team of 7 and we use him across different lodges for training new house boys

## RAJAN CHOUHAN

**Rajan Chouhan** – From the neighboring village of Dhanwar he joined the lodge as a U.T. helping with dishes in the kitchen. Today he is the assistant captain in the restaurant



These are just a few examples, more than **70% of our staff is from neighbouring villages**. Their commitment, dedication, support by lodge & the belief in them has moved them to senior positions in a luxury lodge.



# CHANGE MAKERS

## NARESH GUDDA

**Naresh Singh or Gudda** as he is popularly known in Bandhavgarh and in the wildlife circles from a humble rural background.

Gudda is from Tala Village, Bandhavgarh – an address known to every Tiger enthusiast.

His is an inspirational story for every common villager who stays on the fringe of our Tiger reserves which are booming with tourism and most fail to find a connect to such repute.

Gudda is an icon amongst the local & a top rated naturalist, requested by guests by name



# COMMUNITY INITIATIVES

Narna is a small tribal village with a population of 567 people and we are the only lodge there. Our approach has been simple with the village - communicate, engage & support. We also have a message in our literature requesting guest to contribute generously. Also the lodge works closely with the local school, Panchayat and village bodies. We run a small cooperative farming venture (**Baadi Project**) with 4 families and what they grow is purchased by the lodge. Seeds, technical assistance and supervision are provided by the lodge. Regular contributions for organizing small sport meets, temple work & village function is taken care by the lodge.



STATIONERY AND BAGS DISTRIBUTION AT NARNA VILLAGE  
- CONTRIBUTED BY GUEST AT KANHA EARTH LODGE



## Visit to a local school in Sarahiri Village near Pench National park

Every child is born a naturalist. Their eyes are, by nature, open to the glories of stars, the beauty of the flowers, and the mystery of life'. - **Ritu Ghatourey**. We took this special occasion of Children's Day, to organize a sketching competition for the school kids of Sarahiri village where they sketched their favorite side of nature.



## LODGE VISIT BY SCHOOL KIDS

Pugdundee safaris strongly believes in inclusiveness of local communities that inhabit the areas around our lodges. Involving the local communities in our sustainable conservation journey has been one of the key pillars of our ecotourism model.

Recently our Kanha Earth Lodge team invited school children of the Narna village government school to savour and experience our Eco-tourism flavours.





# TRAINING & TEAM BUILDING



# LOCAL SUPPLY CHAIN

## Supply Chain Overview

- More than 70% supplies are locally sourced from locals.
- Many marginal farms part of the supply chain and also regular buying from tribal village markets.
- Products sourced - dairy products, fruits & vegetables, bulk items like wheat, rice and pulses.





# Customer

A customer by his visit is not only contributing to the lodge & the multiplier effect around all services, but is also giving us an opportunity to **introduce him to wildlife, conservation & holistic activities**. As a lodge we cash on to this opportunity of having the guest with us for more than 3 days on average.

Good briefing, reading material, presentations have converted many a regular leisure tourists into ambassadors for wildlife & conservation, for sure also regular repeat guest for our lodges by providing them this insight, vision & differentiation.



# Holistic Activities

- Nature Walk
- Cycling Tours
- Picnics
- Village Visits
- Local Haat Visits
- Special Bush Dinner
- Presentation
- Wildlife Documentaries
- Local School Visits
- Cultural Performances
- Workshops





# CONSERVATION

## ORGANIC KITCHEN GARDEN



# NO TO PLASTIC WATER BOTTLES

We work to replace plastic with environment healthy alternatives. We are quickly turning to **eco friendly options of providing filtered water** at all times rather than going for easy to avail packaged water bottles. Starting this season we have started offering stainless steel bottles which can be refilled anytime from the refueling station. A onetime use and throw plastic bottle takes around 450 years to completely degrade







## Reduction of Plastic Bottled Water

We had shared earlier that 4 of our lodges did away with packaged plastic water bottles from October 2015. We are delighted to add that our 5th lodge joined the bandwagon from October 2016, thus reducing the consumption of bottled water in these lodges upto 96%.

At arrival, our guests are gifted with a food grade stainless steel bottle which can be refilled from the water filters in the common areas. The guests get to keep the bottle for further use, thus helping in spreading the message further.

Sharing some details on how we have done till now.

2015-16 Saved 27,000+ Plastic bottles

2016-17 Saved 36,000+ Plastic bottles

So, in only 2 Seasons  
63,000 less one-litre bottles in our waste streams



"We had a great stay at Kings Lodge. We were also very impressed with their commitment to conservation, my water bottle now sits on my desk, reminding me of our wonderful trip to India and Bandhavgarh."

"This is also an eco lodge and they avoid using plastic water bottles instead we were given steel bottles which we could fill from various water stations – this is a great practice."

"I am only one, but I am one. I cannot do everything, but I can do something. And I will not let what I cannot do interfere with what I can do"

- Edward Hale

# Green Practices at the Lodge

- Proper Waste Management
- Filtered Water
- Garbage Composition
- Use of Solar Cookers
- Organic Farming
- Filtered Water
- Low Flow Taps & Showers
- No Television, Music & DJs
- 100% LED&CFL lightings
- Other Green Practices





?



A scenic landscape at sunset or sunrise. Two houses with red-tiled roofs are visible in the middle ground, partially obscured by dense green vegetation and tall trees. The sky is filled with soft, golden light from the setting or rising sun, creating a warm and peaceful atmosphere. The foreground is dominated by lush green grass and wildflowers.

“NATURE LOVES COURAGE. WE MAKE  
THE COMMITMENT AND NATURE WILL  
RESPOND TO THAT COMMITMENT BY  
REMOVING IMPOSSIBLE OBSTACLES.”



# GREEN OVER PLASTIC



**Green over plastic**  
**#withpugdundee**

Launched our own logo to fight single use plastic

# USING OF GLASS MADE DISPENSERS





# INITIATIVE BY PUGDUNDEE



Using Wooden Toothbrushes and Earbuds

# INITIATIVE BY PUGDUNDEE



USING WOODEN SPOONS



# INITIATIVE BY PUGDUNDEE



Using Containers for Tea, Coffee and Milk

# INITIATIVE BY PUGDUNDEE



Using Of Newspaper Made Carry Bags



# INITIATIVE BY PUGDUNDEE



Plastic free Breakfast On Jeep

# INITIATIVE BY PUGDUNDEE



Using Of Plant Based Food Packaging Boxes



# INITIATIVE BY PUGDUNDEE



Tetra pack replaced with sippers containing fresh lemonade or ice tea

# GUESTS REVIEWS ON TRIPADVISOR



Jyoti wrote a review 2 Mar

delhi • 22 contributions • 10 helpful votes

Follow



## Lovely stay in a lovely place

"Stayed for three nights in the first week of February .

The start was a disaster for I took well over an hour or maybe more to find the place because the sign board had been painted over the previous day and my phone internet was not working in that entire area . So after reaching almost till the gate and then back and forth in between , somehow managed to find the place .

After that , it was an almost perfect stay .

The architecture and the cottages are really stunning ! Beautiful stone , mud and wood .

I loved the location since it was amongst a well wooded forested area at a distance from the village .

The staff is warm and gracious . Housekeeping is great , with the room cleaned every time one steps out .

Since I am quite finicky about cleanliness , I really appreciated them for this ,

Food is great too with a variety of things at different meals . Indian , tribal ( which was delicious ) , continental - all was equally good . Vijay in the restaurant was especially careful about ensuring that guests are happy after each meal .

Safaris with Samrat ( naturalist ) were something I really enjoyed . Since I am not totally focused only on Tigers , I was happy to note that Samrat was interested and knowledgeable about the other small and big things in the jungle . So even though we didn't get to see any tigers , the safaris were enjoyable because of all the tit bits he kept on sharing throughout .

One fact that is praise worthy is that the lodge is very **eco** friendly and uses no plastic . So no ugly plastic bottles in rooms !!! Filtered bottle is provided as much as one needs .

Food is packed in **eco** friendly material and not cheap clingy plastic . This is very very commendable ! One sees all hotels making token gestures about sustainability but rarely anyone walking the talk . Most of their measures are limited to asking guests not to throw towels for washing etc etc . So full marks to the lodge on this point .

The kitchen garden patch is also very nice .

One point - The room doesn't have a full length mirror . Would have been nice if it had . And it's difficult to close the doors to the back sitting area without a handle to pull it in . That needs to be remedied I think . But these are really minor points .

All in all a wonderful stay !!!"

[Read less](#)



# GUESTS REVIEWS ON TRIPADVISOR



**Madeleine L** wrote a review 13 Mar

Follow ...

Hank, Noord-Brabant, Netherlands • 59 contributions • 26 helpful votes



## A beautiful, secluded starting-point for your safaris

"Kanha Earth Lodge is one of the most beautiful lodges I've ever stayed. And the best part about it is that it's an eco-lodge. Or maybe the best part is the food (traditional regional cuisine). Actually the best part are the great naturalists who accompanied us on our drives in the park. I can highly recommend Sanjay, who was knowledgeable and courteous."

[Read less](#) ▲

**Date of stay:** March 2019

**Trip type:** Travelled with friends

Rooms  
 Service

*This review is the subjective opinion of a TripAdvisor member and not of TripAdvisor LLC*



**Astrid P** wrote a review 13 Mar

Follow ...

Graz, Austria • 5 contributions • 1 helpful vote



## A wonderful place to stay - In tune with Nature

"Close to the Banbhavgarh Tiger Reserve this beautiful lodge is the ideal starting point for getting in touch with Nature's treasures. As an eco-lodge it not only contributes to sustainability but sets an example for living in tune with nature. Beautiful cottages in a lovely setting, great food, friendly people and lots of valuable information make the stay at Kings Lodge unforgettable. Whatever questions you might have, Amit and his staff are there to help and Pugdundee's knowledgeable naturalists (especially Gudda) will make you safaris to the park a great experience."

[Read less](#) ▲

**Date of stay:** March 2019

**Trip type:** Travelled with friends

Rooms  
 Service

Location

*This review is the subjective opinion of a TripAdvisor member and not of TripAdvisor LLC*

# GUESTS REVIEWS ON TRIPADVISOR



**Astrid P** wrote a review 13 Mar

📍 Graz, Austria • 5 contributions • 1 helpful vote

Follow ...



## In harmony with Nature - Balm for the soul

"One of the most beautiful places to stay - that was my first thought when I arrived at Kanha Earth Lodge. I spent four days at the lodge from where we made various trips to the Tiger Preserve with Pugdundee Safaris. As an eco-lodge Kanha Earth lodge is devoted to sustainability and the preservation of the treasures of Nature. Delicious Food, warm hospitality, great safaris and above all the wonderful knowledgeable naturalists made this stay perfect. Thank you for an unforgettable experience!"

[Read less](#) ▲

**Date of stay:** March 2019

**Trip type:** Travelled with friends



Value



Sleep Quality



Service

*This review is the subjective opinion of a TripAdvisor member and not of TripAdvisor LLC*



# FEW BENEFITS OF BEING SUSTAINABLE

**LOWER COST OF OPERATIONS**

**GREAT FOR ENVIRONMENT**

**HIGHER GUEST SATISFACTION**

**HIGHER REPEAT GUEST**

**LOW TURNOVER OF STAFF**

**PROUD TEAM**

# PUGDUNDEE SAFARIS

“No matter how far you journey, you are always on Mother Earth. And for her hospitality, she demands so little. That wherever we travel, we respect her landscapes, conserve her resources, value her local traditions. It is only if we travel this way that we can gift our children the same green, generous planet to explore.”



*Exclusive Wildlife Lodges and Experiences*

# THANK YOU !